

Curso de GNU/Linux

Curso de GNU/Linux



INSTALACIÓN DE KUBUNTU

Jesús David Navarro
jEsuSdA



Elección de arranque



30s

Start or install kubuntu
Start Kubuntu in safe graphics mode
Check CD for defects
Memory test
Boot from first hard disk

F1 Help F2 Language F3 Keymap F4 VGA F5 Accessibility F6 Other Options



Arranque



```
Loading essential drivers...      ok
Mounting root file system...     ok
Moving mount points...          ok
Adding live CD user...
```



Iniciando KDE



Iniciando KDE



Escritorio KDE



Elección de Idioma



The screenshot shows the 'Install' window of the Kubuntu installer. The window title is 'Install'. The main content area has a 'Welcome' heading and the Kubuntu logo. Below the logo, there is text explaining that the user is ready to install and that the language choice will be the default for the final system. A list of languages is displayed, with 'English' selected. At the bottom of the window, there are three buttons: '< Go Back', 'Continue >', and 'Cancel'. The status bar at the bottom of the window shows 'Step 1 of 6', the 'Install' application icon, and system information including the date '2006-08-23' and time '10:55'.

Welcome

Ready to install? Once you answer a few questions, the contents of the live CD can be installed on this computer so you can run the system at full speed and without the CD.

Answering the questions should only take a few minutes.

Please choose the language used for the installation process. This language will be the default language for the final system.

Language

- Bahasa Indonesia
- Bosanski
- Català
- Cymraeg
- Dansk
- Deutsch
- Eesti
- English
- Español
- Esperanto
- Euskara
- Français
- Galego
- Hrvatski
- Icelandic
- Italiano

Step 1 of 6

< Go Back Continue > Cancel

Install 2 10:55
3 4 2006-08-23



Elección de Zona Horaria



Install

Where are you?

Select a city in your country and time zone.

Selected city: Selected region:

Time zone: Current time:

Step 2 of 6

Taskbar: **10:56** **2006-08-23**



Esquema de Teclado



Install

Keyboard layout

Which layout is most similar to your keyboard?

- Layout
- American English
- Belarusian
- Belgian
- Brazilian (ABNT2 layout)
- Brazilian (EUA layout)
- British English**
- Bulgarian
- Canadian French
- Croatian
- Czech
- Danish
- Dutch
- Dvorak
- Estonian
- Finnish
- French
- German
- Greek
- Hebrew

You can type into this box to test your new keyboard layout.

Step 3 of 6


< Go Back Continue > Cancel

2006-08-23 09:57



Cuenta de usuario



Who are you? 

What is your name?

What name do you want to use to log in?

If more than one person will use this computer, you can set up multiple accounts after installation.

Choose a password to keep your account safe.



Enter the same password twice, so that it can be checked for typing errors.

What is the name of this computer?

This name will be used if you make the computer visible to others on a network.

Step 4 of 6

< Go Back Continue > Cancel

Taskbar:  Install  2 09:57
3 4 2006-08-23



Seleccionando disco



Install

Select a disk

kubuntu

You can have the installer automatically create space in various ways on any one of the following hard disks. Alternatively, you can partition the disks manually.

installer
Detecting file systems...
85%
Cancel

Step 5 of 6

< Go Back Continue > Cancel

Install 2 3 4 09:58 2006-08-23



Particionando el disco



Install

Prepare disk space

How do you want to partition the disk?

- Erase entire disk: SCSI1 (0,0,0) (sda) - 8.6 GB VMware, VMware Virtual S
- Manually edit partition table

New partition size: 0%

Step 5 of 6


< Go Back Continue > Cancel

09:58
2006-08-23



Confirmación de instalación



Ready to install 

Your new operating system will now be installed with the following settings:

Details

Language: English
Keyboard layout: uk
Name: kubuntu
Login name: kubuntu
Location: Europe/London
Partitioning:
If you continue, the changes listed below will be written to the disks.
Otherwise, you will be able to make further changes manually.

WARNING: This will destroy all data on any partitions you have removed as well as on the partitions that are going to be formatted.

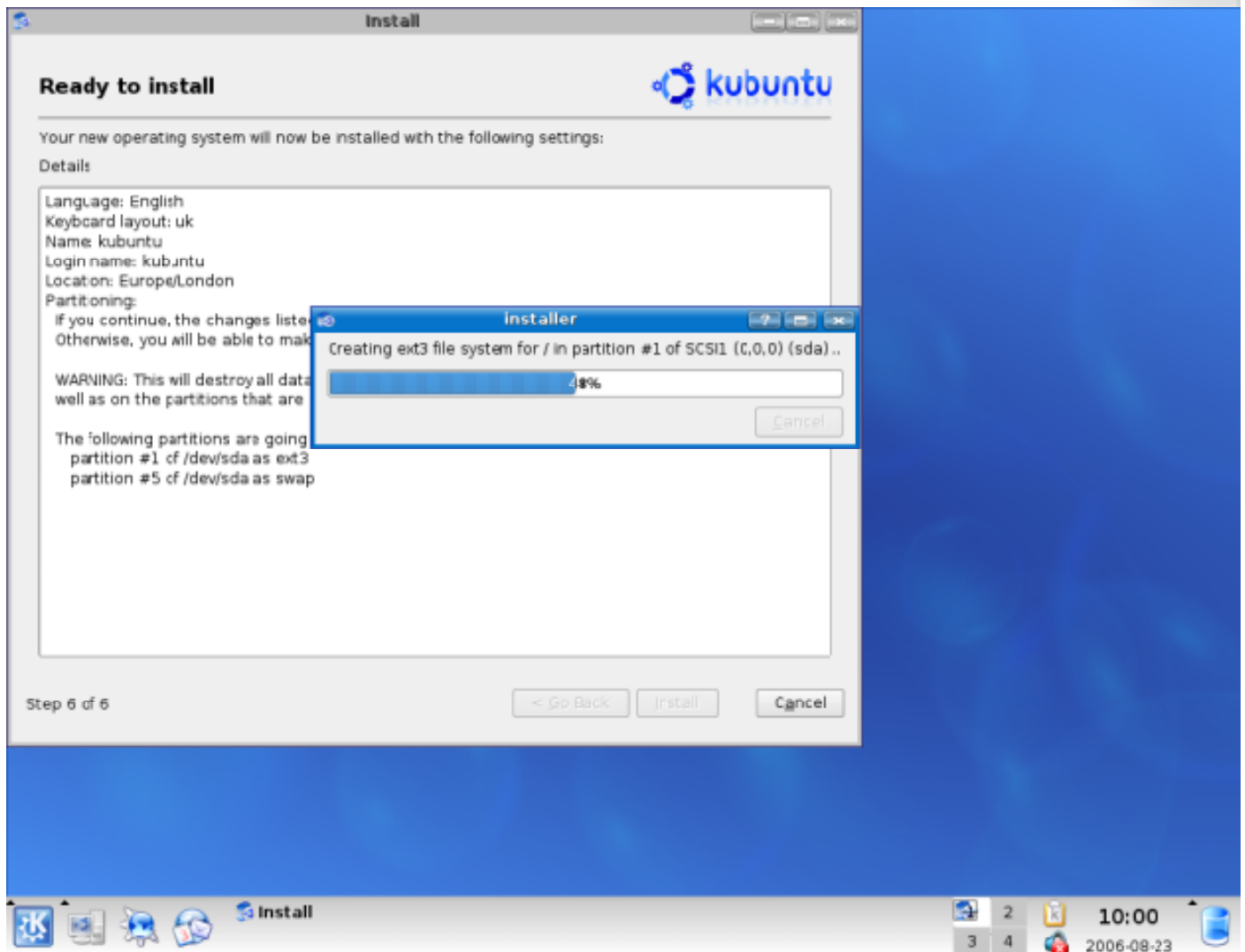
The following partitions are going to be formatted:
partition #1 cf /dev/sda as ext3
partition #5 cf /dev/sda as swap

Step 6 of 6

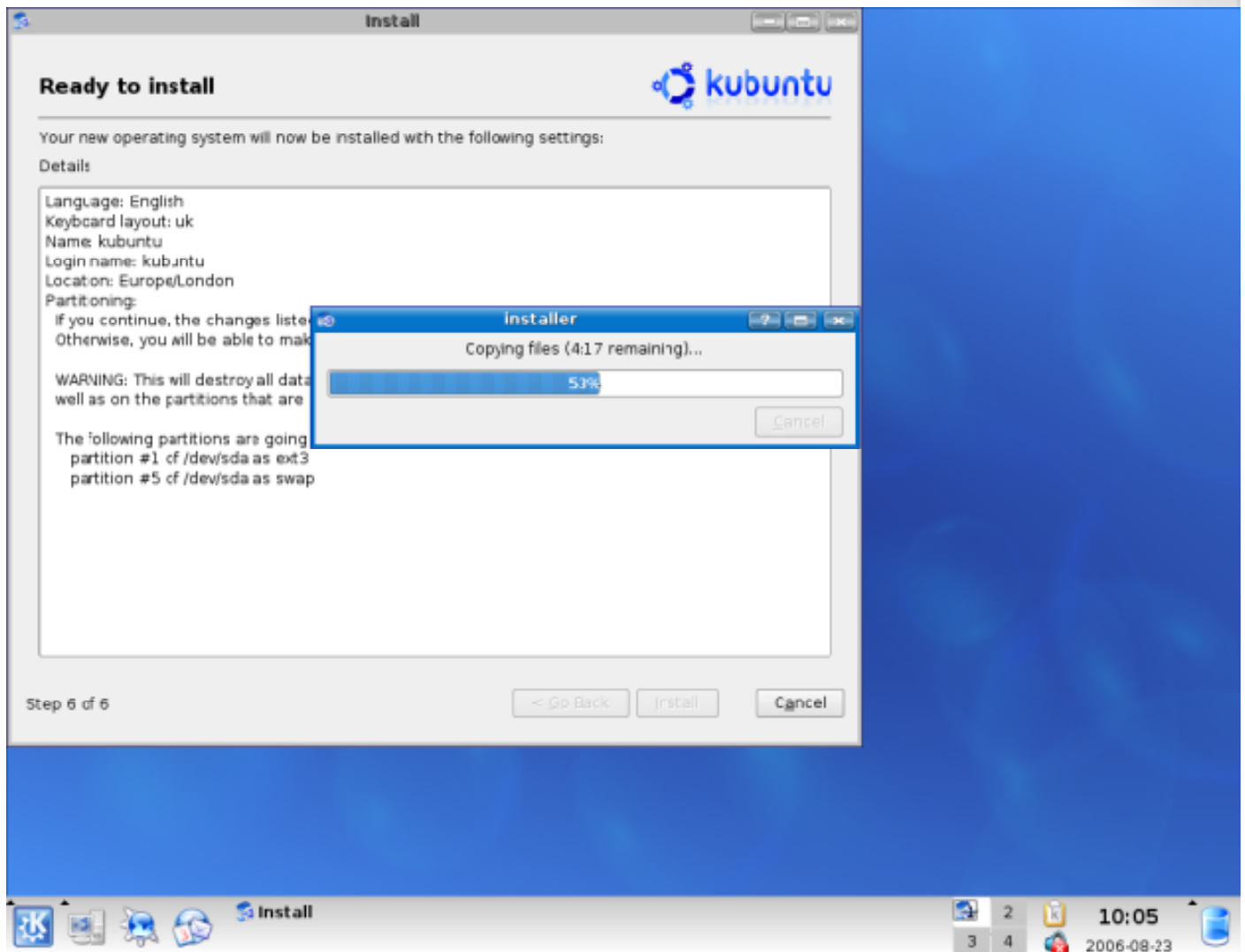
09:59
2006-08-23



Preparando el disco



Copiando archivos



Configuando hardware



The screenshot shows the Kubuntu installer window titled "Install". The main window has a header "Ready to install" with the Kubuntu logo. Below the header, it states "Your new operating system will now be installed with the following settings:" and lists details such as Language: English, Keyboard layout: uk, Name: kubuntu, Login name: kubuntu, and Location: Europe/London. A warning message is visible: "WARNING: This will destroy all data well as on the partitions that are". At the bottom of the main window, it says "Step 6 of 6" and has buttons for "< Go Back", "Install", and "Cancel".

An "installer" dialog box is overlaid on top of the main window. It displays the text "Loading module 't821x' for IDE chipset support..." and a progress bar that is 94% full. A "Cancel" button is located at the bottom right of the dialog box.

The desktop environment is visible at the bottom, showing a taskbar with icons for Kubuntu, a file manager, and the "Install" window. The system tray on the right shows the date "2006-08-23" and the time "10:14".



Finalizado



Install

Ready to install

Your new operating system will now be installed with the following settings:

Details

Language: English
Keyboard layout: uk
Name: kubuntu
Login name: kub
Location: Europe
Partitioning:
if you continue,
Otherwise, you r

WARNING: This r
well as on the p

The following pa
partition #1 of
partition #5 of

Installation complete

Installation is complete. You need to restart the computer in order to use the new installation. You can continue to use this live CD, although any changes you make or documents you save will not be preserved. Make sure to remove the CD when restarting the computer, otherwise it will start back up using this live CD rather than the newly-installed system.

Continue using the live CD Restart now

Step 6 of 6 < Go Back Install Cancel

2 10:37
3 4 2006-08-23

